

---

**KIT PART NUMBER 4750066**  
**INSTRUCTIONS FOR REPLACING YOUR**  
**NATIONAL VENDORS HOT WATER VALVE (P/N 4751243)**  
**WITH HOT WATER VALVE, P/N (4751256)**

**CHECK THE PARTS RECEIVED IN THIS KIT WITH THE PARTS LIST IN THESE INSTRUCTIONS. IF ANY PARTS ARE MISSING CONTACT THE CRANE MERCHANDISING SYSTEMS' PARTS DEPARTMENT AT 1-800-621-7278.**

Read these instructions carefully before installing the kit.  
Keep these instructions for part numbers and for future reference.

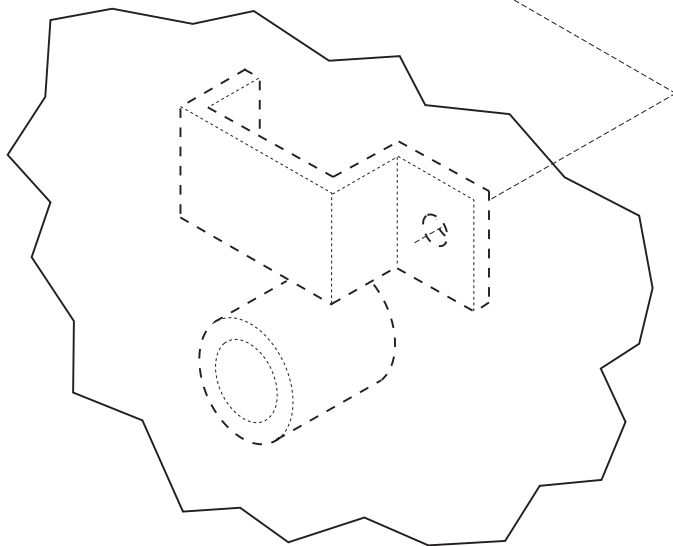
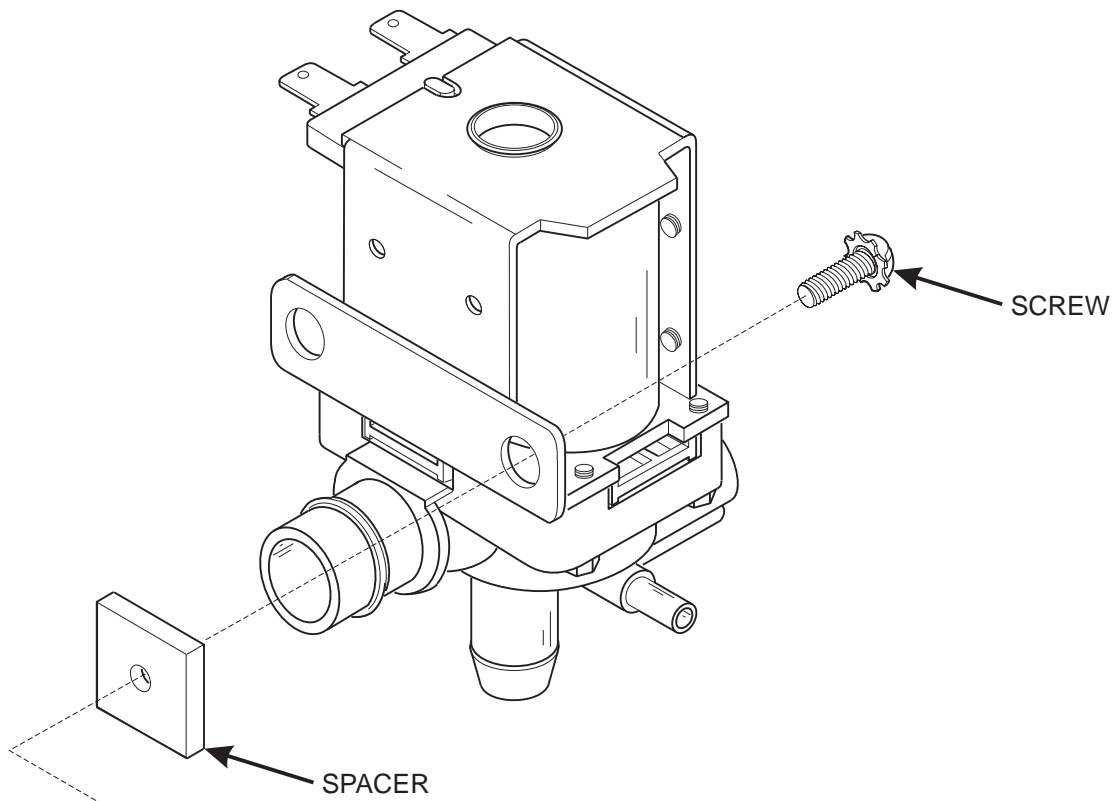
**THIS KIT CONTAINS THE FOLLOWING:**

<b>PART NUMBER</b>	<b>DESCRIPTION</b>	<b>QTY</b>
4750067	INSTRUCTIONS - KIT 4750066	1
4751256	VALVE ASSEMBLY - HOT WATER TANK	1
4751272	SPACER - 475 - VALVE	1
9900170	SCREW - #10-32 X 1/2"PHIL.PAN	1

**!WARNING - Electrical Shock Hazard - Unplug machine power cord at wall receptacle. Failure to do so could result in fatal electrical shock.**

**REPLACING THE HOT WATER VALVE**

1. Disconnect power from the machine.
2. Remove the necessary covers to obtain clear access to the valves.
3. Shut off the water at the water inlet shut-off valve.
4. Drain the water from the hot water tank.
5. Disconnect the valve harness from the valve you are replacing.
6. Remove the screw securing the valve assy to the hot water tank. Remove the valve.
7. Install the replacement valve supplied in the kit as follows (see figure 1 on page 2):
  - a. Assemble the spacer to the valve using the screw supplied. Insert the screw through the mounting bracket of the valve assembly. Using a wrench to hold the spacer, thread the screw into the spacer.
  - b. Attach the valve with the spacer and screw to the hot water tank.
  - c. Re-connect the valve harness you removed in step 5.
8. Open the water inlet shut-off valve.
9. Reinstall all covers that you removed in step 2.
10. Connect power to the machine.
11. Fill the hot water tank by following the standard fill procedures detailed in the setup or operator guides supplied with your machine.



**Figure 1**